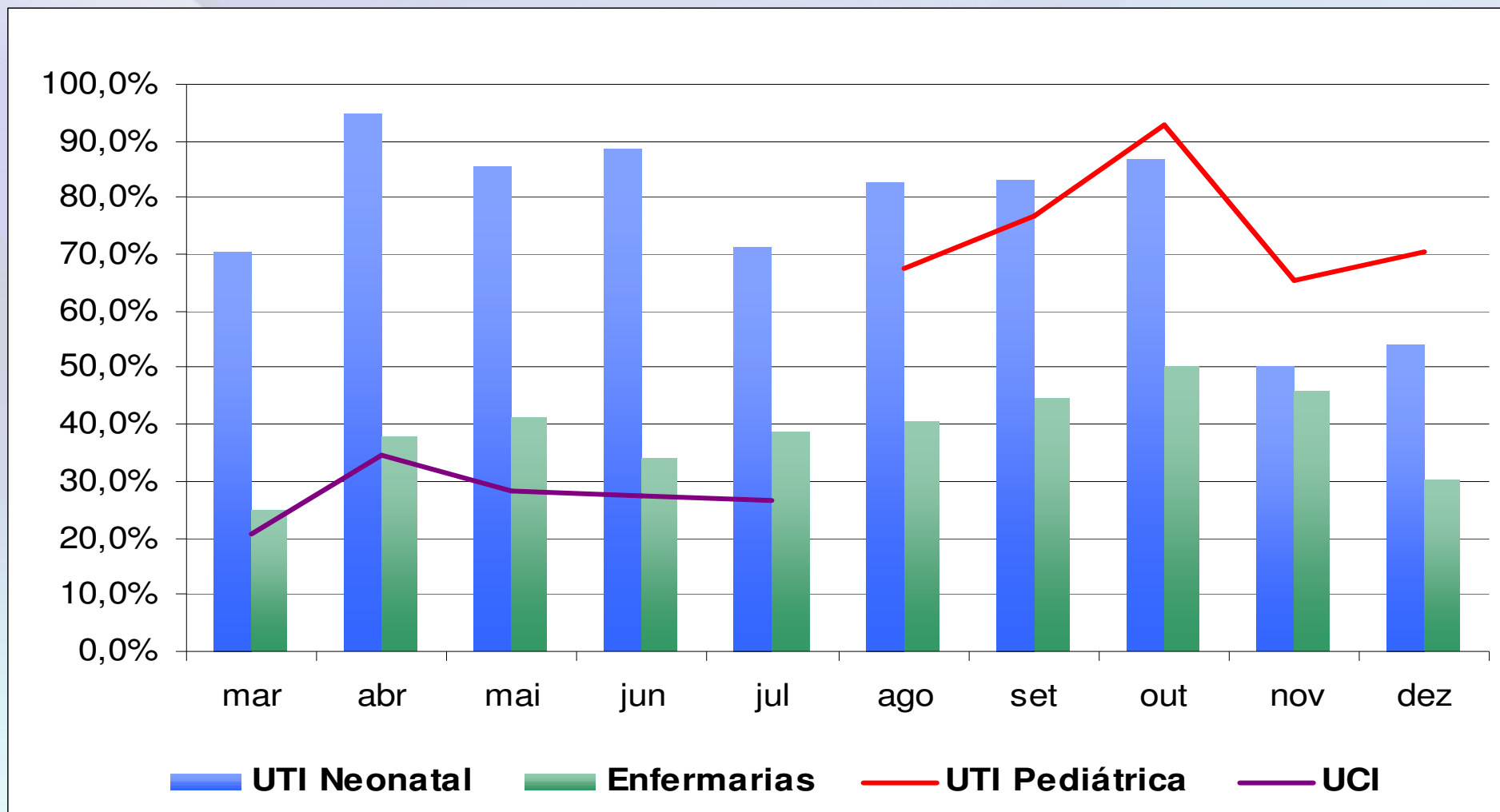


Indicadores Hospitalares 2010

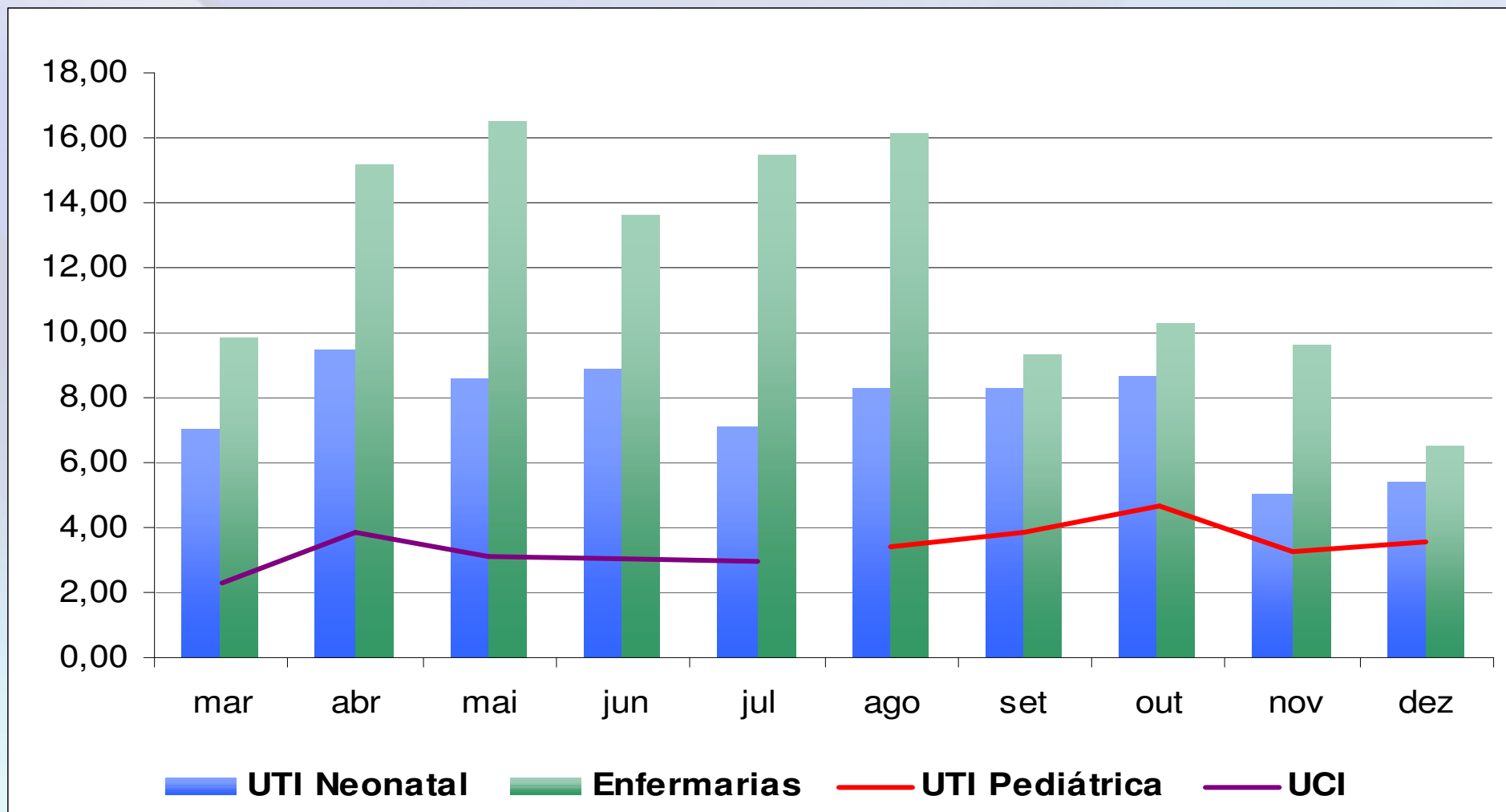
Hospital Infantil
WALDEMAR MONASTIER



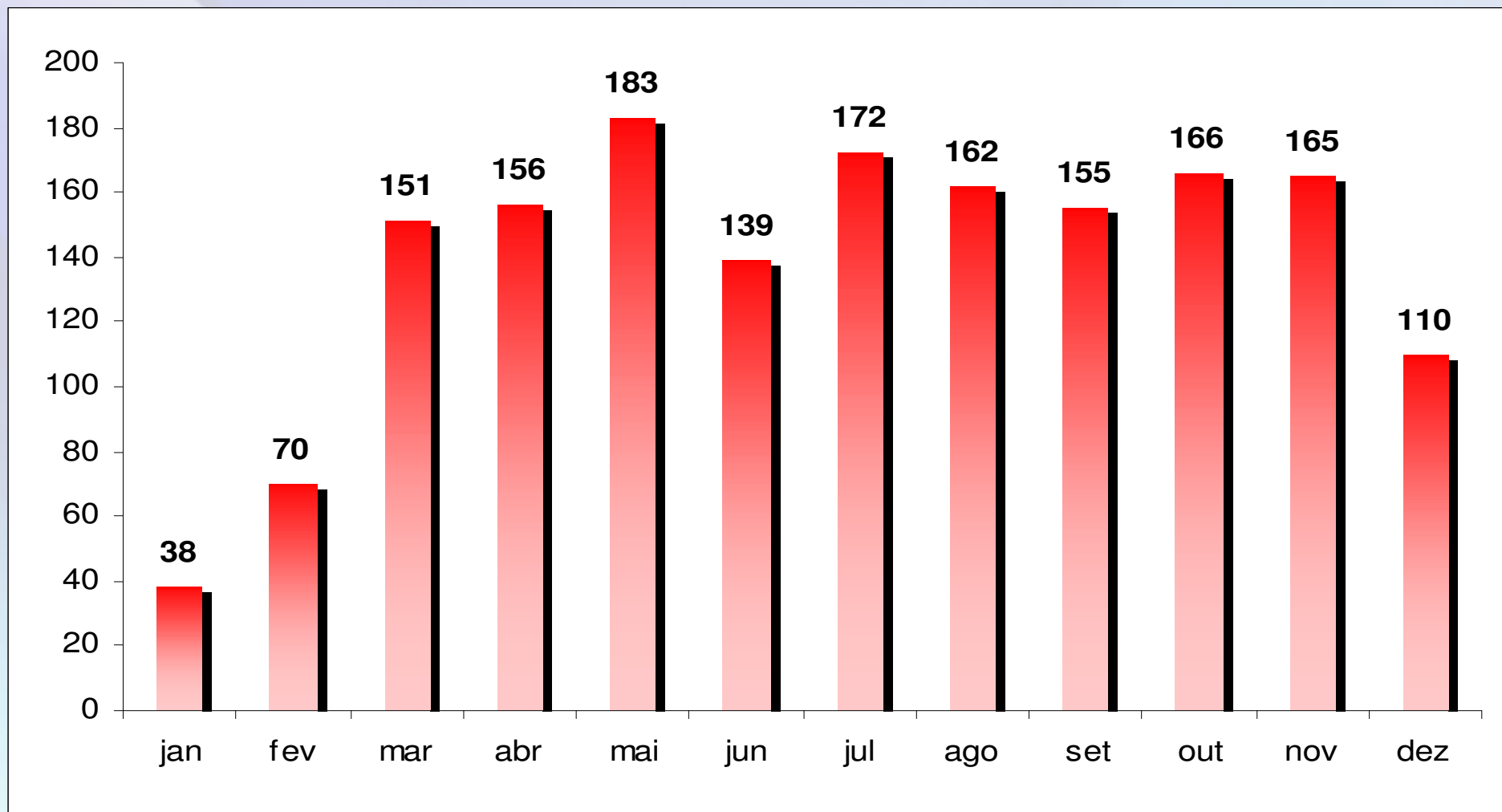
Taxa de Ocupação



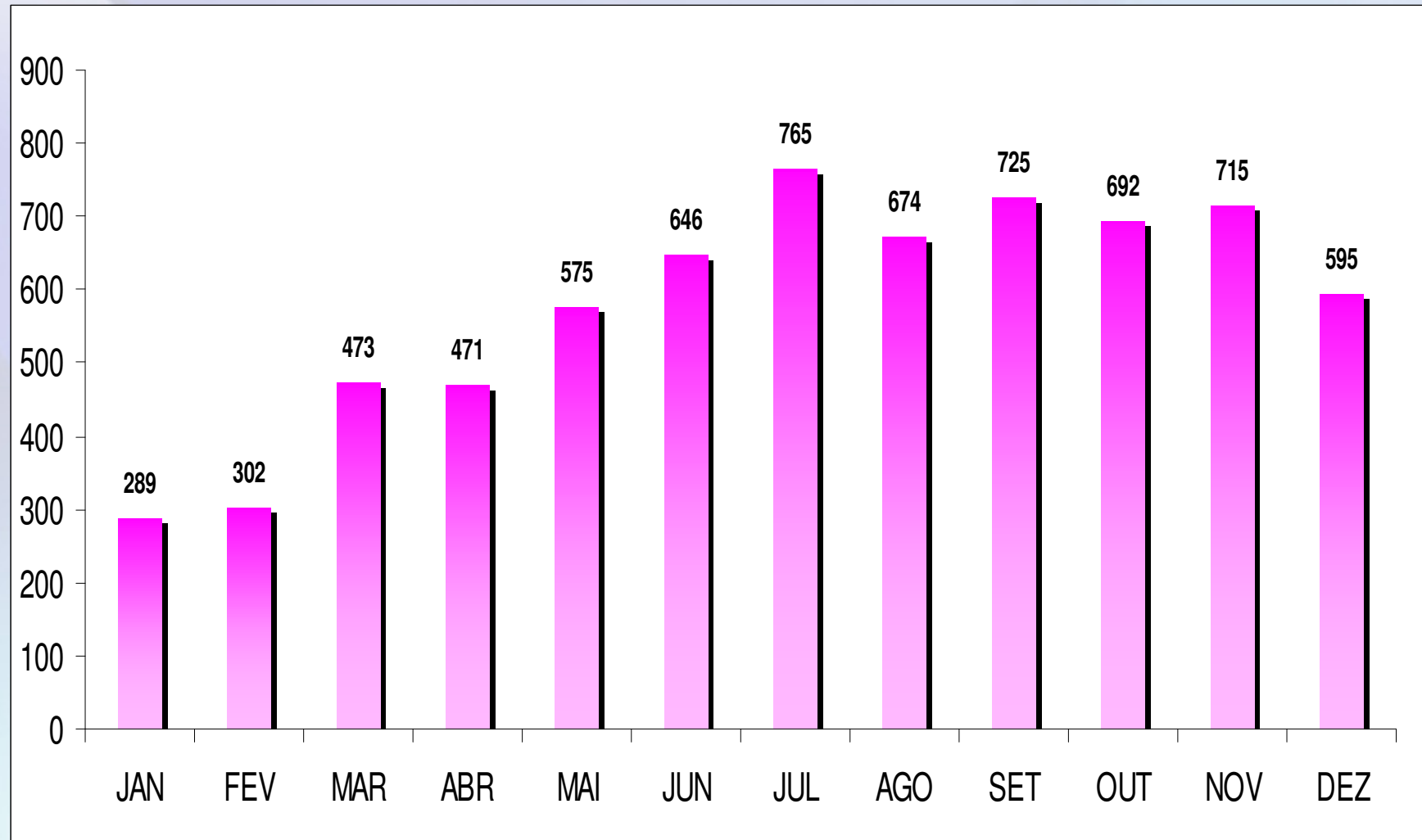
Média de Pacientes / Dia



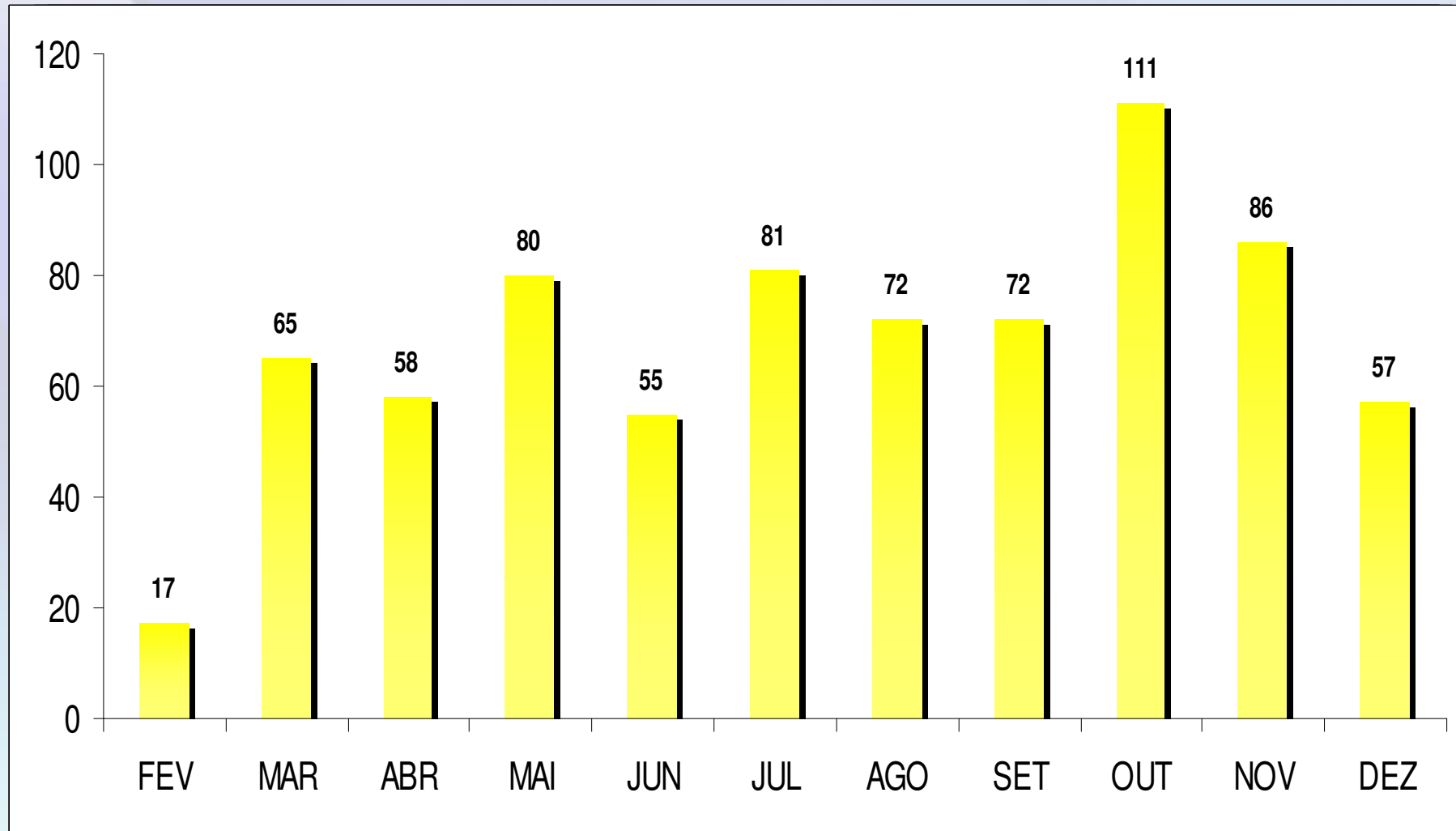
Internações



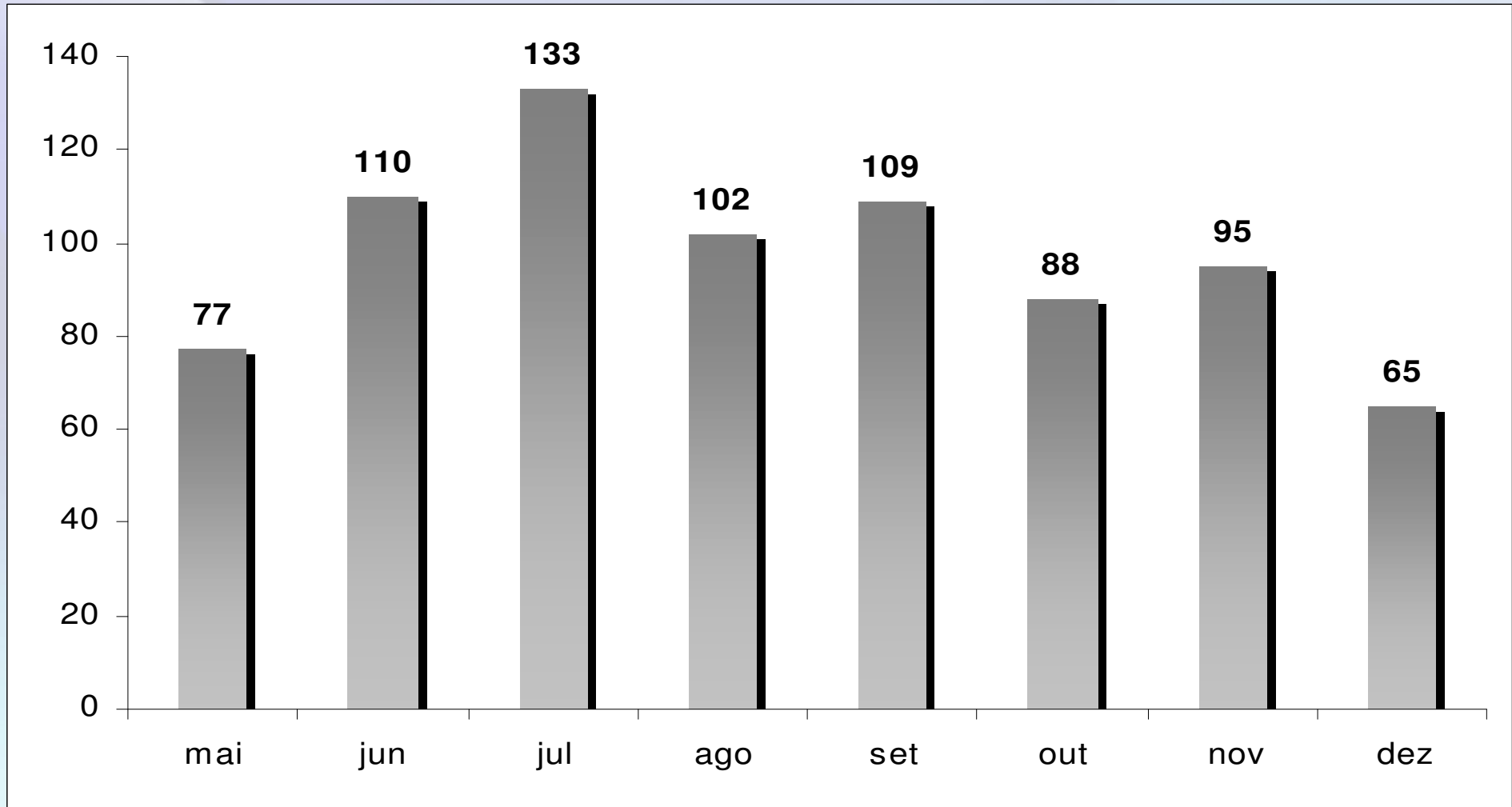
Consultas Ambulatoriais



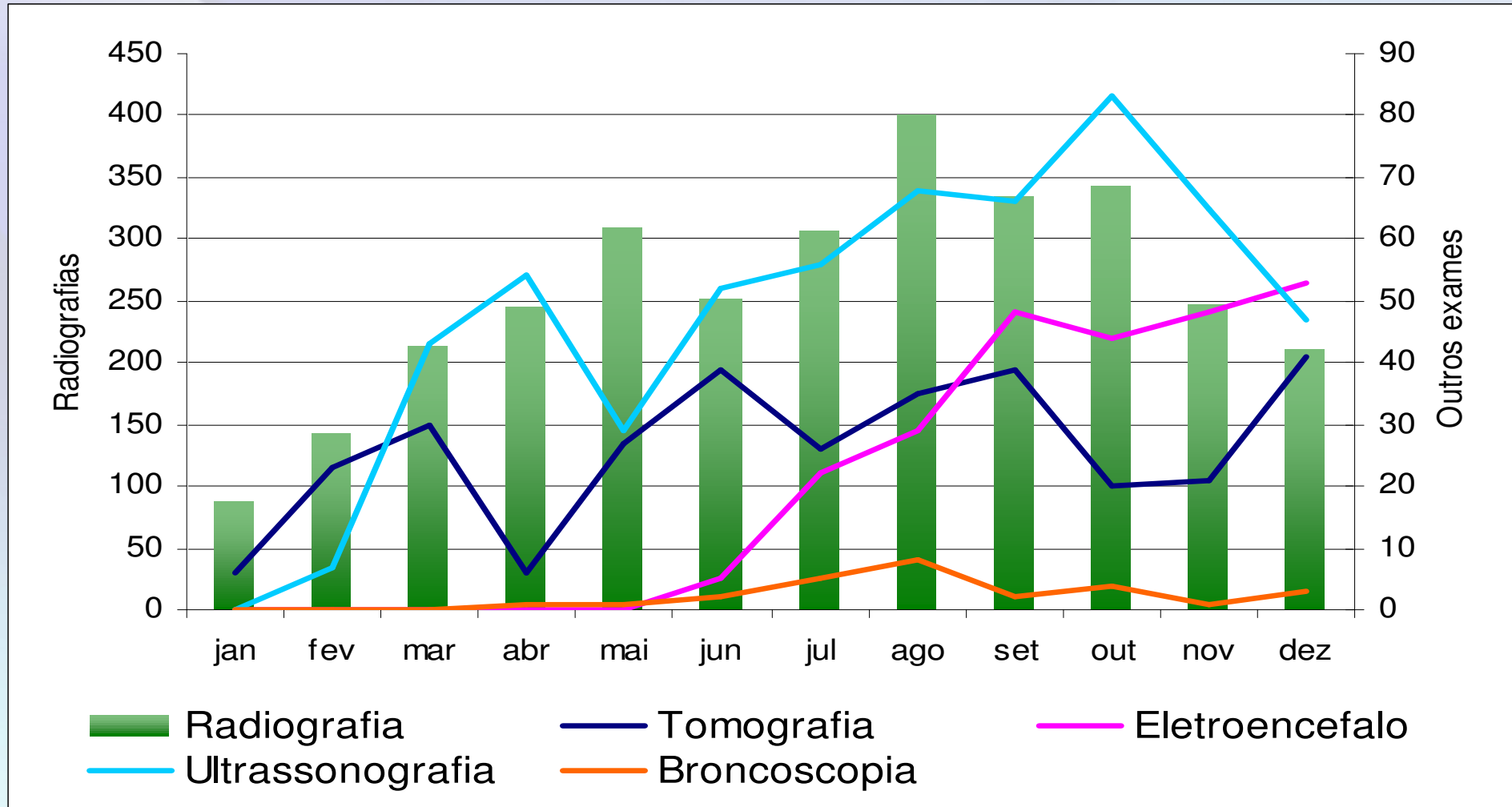
Cirurgias Realizadas



Pronto Atendimento

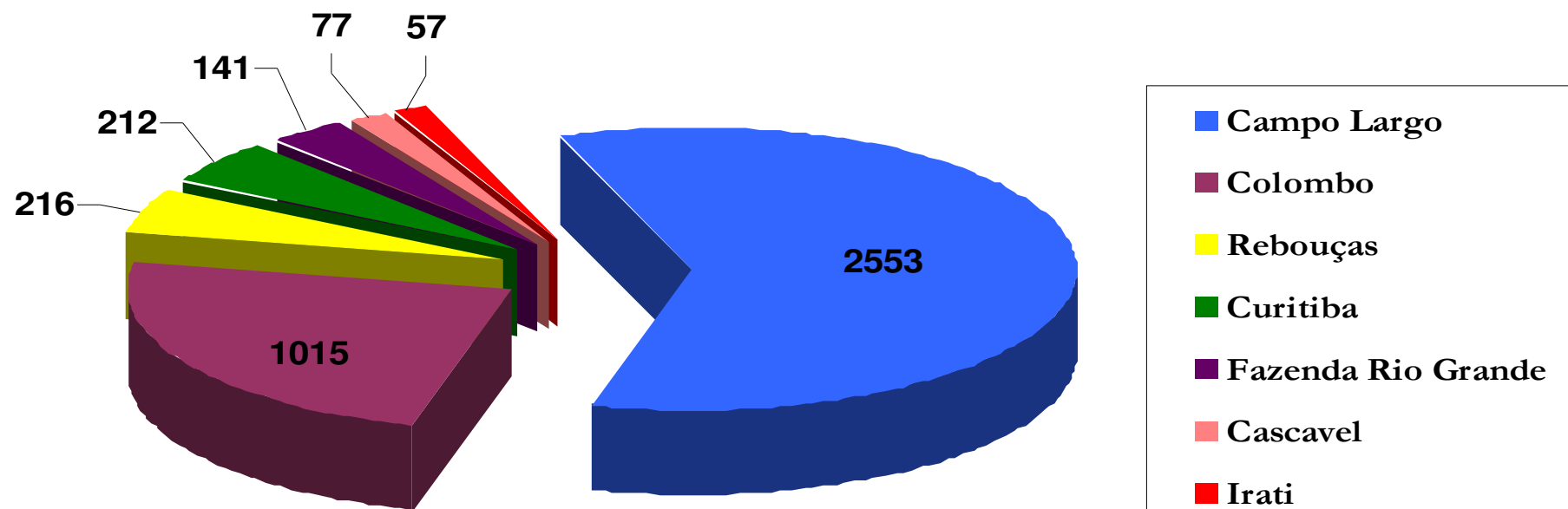


Exames de Imagem e Diagnóstico



Consultas Ambulatoriais por Município

Período de Abril a Dezembro



A estatística é feita com base nos Municípios de maior freqüência.